



A	29/01/15	PMR	Minor changes to the internal layout and fenestration positions
---	----------	-----	---

Rev	Date	Drawn	Description
<h1>AYLESBURY REGENERATION</h1> <h2>Notting Hill Housing Group   London Borough of Southwark</h2>			



Notes:  
Do not scale from drawings unless by agreement with HTA. Use figured dimensions only. Check all dimensions on site prior to commencing the works. Drawing to be read in conjunction with other relevant consultant information.

This drawing is the copyright of HTA Design LLP and must not be copied or reproduced in part, or in whole, without the express permission of HTA Design LLP.  
Drawing to be read in conjunction with outline specification.

### Legend

S06 - Ground Floor  
drawing title

S06-101  
drawing number

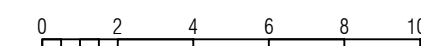
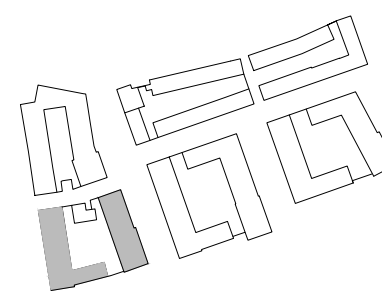
A  
revisi

Notting Hill Housing Aylesbury Regeneration 1:200  
client / project scale @ A1

NHH-AES	LTD
project number	originated by

## PLANNING

HTA Design LLP  
106-110 Kentish Town Road  
London, NW1 9PX  
020 7485 8555  
[www.hta.co.uk](http://www.hta.co.uk)











B 29/01/15 SEW Minor changes to the internal layout and fenestration positions  
A 13/11/14 SEW Block 6D 3B5P layout revised

Rev Date Drawn Description

## AYLESBURY REGENERATION

Notting Hill Housing Group | London Borough of Southwark



BARRATT  
LONDON

hta

Hawkins  
Brown

mæ

WSP

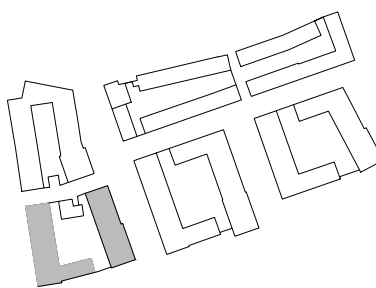
Deloitte



Notes:  
Do not scale from drawings unless by agreement with HTA. Use figured dimensions only. Check all dimensions on site prior to commencing the works. Drawing to be read in conjunction with other relevant consultant information.

Legend

This drawing is the copyright of HTA Design LLP and must not be copied or reproduced in part, or in whole, without the express permission of HTA Design LLP.  
Drawing to be read in conjunction with outline specification.



0 2 4 6 8 10 m



## S06 - Second Floor

drawing title

## S06-103

drawing number

## B

revision

Notting Hill Housing Aylesbury Regeneration 1:200

client / project

scale @ A1

NHH-AES

project number

LTD

originated by

PLANNING

status

HTA Design LLP  
106-110 Kentish Town Road  
London, NW1 9PX  
020 7485 8555  
www.hta.co.uk

HTA Design LLP  
21 Slater's Steps  
Edinburgh, EH8 8PB  
0131 344 4742  
www.hta.co.uk







B 29/01/15 SNM Minor changes to the internal layout and fenestration positions  
A 13/11/14 SEW Block 6D 3B6P layout revised

Rev Date Drawn Description

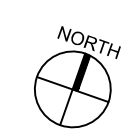
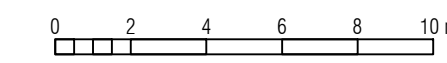
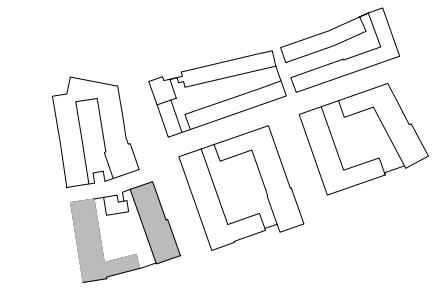
**AYLESBURY REGENERATION**  
Notting Hill Housing Group | London Borough of Southwark



Notes:  
Do not scale from drawings unless by agreement with HTA. Use figured dimensions only. Check all dimensions on site prior to commencing the works. Drawing to be read in conjunction with other relevant consultant information.

Legend

This drawing is the copyright of HTA Design LLP and must not be copied or reproduced in part, or in whole, without the express permission of HTA Design LLP.  
Drawing to be read in conjunction with outline specification.



**S06 - Third Floor**

drawing title

**S06-104**

drawing number

**B**

revision

**Notting Hill Housing Aylesbury Regeneration** 1:200  
client / project scale @ A1

**NHH-AES**  
project number

**LTD**  
originated by

**PLANNING**  
status

HTA Design LLP  
106-110 Kentish Town Road  
London, NW1 9PX  
020 7485 8555  
www.hta.co.uk

HTA Design LLP  
21 Slater's Steps  
Edinburgh, EH8 8PB  
0131 344 4742  
www.hta.co.uk







B 29/01/15 SNM Minor changes to the internal layouts and fenestration positions  
A 13/11/14 SEW Block 6D 3B5P layout revised

Rev Date Drawn Description

## AYLESBURY REGENERATION

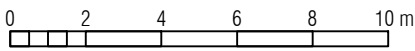
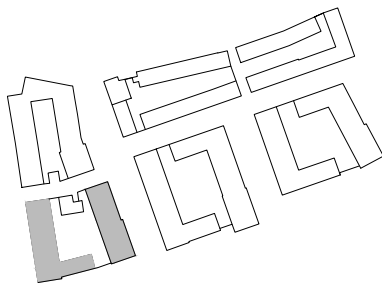
Notting Hill Housing Group | London Borough of Southwark



Notes:  
Do not scale from drawings unless by agreement with HTA. Use figured dimensions only. Check all dimensions on site prior to commencing the works. Drawing to be read in conjunction with other relevant consultant information.

Legend

This drawing is the copyright of HTA Design LLP and must not be copied or reproduced in part, or in whole, without the express permission of HTA Design LLP.  
Drawing to be read in conjunction with outline specification.



## S06 - Fourth Floor

drawing title

## SO6-105

drawing number

## B

revision

Notting Hill Housing Aylesbury Regeneration 1:200

client / project

scale @ A1

NHH-AES

project number

LTD

originated by

## PLANNING

status

HTA Design LLP  
106-110 Kentish Town Road  
London, NW1 9PX  
020 7485 8555  
www.hta.co.uk

HTA Design LLP  
21 Slater's Steps  
Edinburgh, EH8 8PB  
0131 344 4742  
www.hta.co.uk







C 23/01/15 SNM Minor changes to the internal layouts and fenestration positions  
B 13/11/14 SEW Block 6B layout revised  
A 15/10/14 MPM Block 6B layout revised

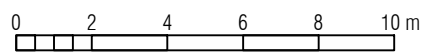
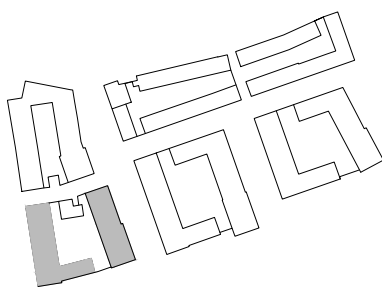
AYLESBURY REGENERATION  
Notting Hill Housing Group | London Borough of Southwark



Notes:  
Do not scale from drawings unless by agreement with HTA. Use figured dimensions only. Check all dimensions on site prior to commencing the works. Drawing to be read in conjunction with other relevant consultant information.

Legend

This drawing is the copyright of HTA Design LLP and must not be copied or reproduced in part, or in whole, without the express permission of HTA Design LLP.  
Drawing to be read in conjunction with outline specification.



S06 - Fifth Floor

drawing title

S06-106

drawing number

C

revision

Notting Hill Housing Aylesbury Regeneration 1:200  
client / project scale @ A1

NHH-AES  
project number

LTD  
originated by

PLANNING  
status

HTA Design LLP  
106-110 Kentish Town Road  
London, NW1 9PX  
020 7485 8555  
www.hta.co.uk

HTA Design LLP  
21 Slater's Steps  
Edinburgh, EH8 8PB  
0131 344 4742  
www.hta.co.uk







C 29/01/15 SNM Minor changes to the internal layout and fenestration positions  
B 13/11/14 SEW Block 6D 3BSP layout revised  
A 15/10/14 MPM Block 6B layout revised

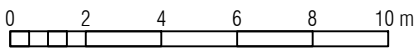
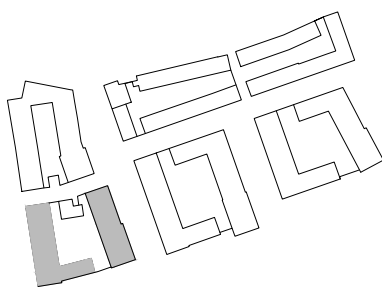
**AYLESBURY REGENERATION**  
Notting Hill Housing Group | London Borough of Southwark



Notes:  
Do not scale from drawings unless by agreement with HTA. Use figured dimensions only. Check all dimensions on site prior to commencing the works. Drawing to be read in conjunction with other relevant consultant information.

Legend

This drawing is the copyright of HTA Design LLP and must not be copied or reproduced in part, or in whole, without the express permission of HTA Design LLP.  
Drawing to be read in conjunction with outline specification.



**S06 - Sixth Floor**

drawing title

**S06-107**

drawing number

**C**

revision

**Notting Hill Housing Aylesbury Regeneration** 1:200  
client / project scale @ A1

**NHH-AES**  
project number

**LTD**  
originated by

**PLANNING**  
status

HTA Design LLP  
106-110 Kentish Town Road  
London, NW1 9PX  
020 7485 8555  
www.hta.co.uk

HTA Design LLP  
21 Slater's Steps  
Edinburgh, EH8 8PB  
0131 344 4742  
www.hta.co.uk







C 29/01/15 SNM Minor changes to the internal layout and fenestration positions  
B 13/11/14 SEW Block 6D 3BSP layout revised  
A 15/10/14 MPM Block 6B layout revised

Rev Date Drawn Description

## AYLESBURY REGENERATION

Notting Hill Housing Group | London Borough of Southwark



BARRATT  
LONDON

hta

Hawkins  
Brown

mæ

WSP

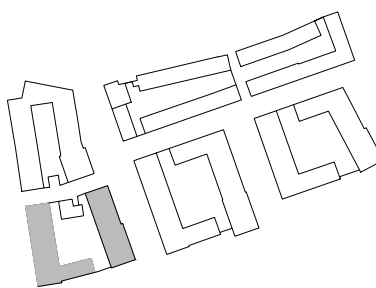
Deloitte



Notes:  
Do not scale from drawings unless by agreement with HTA. Use figured dimensions only. Check all dimensions on site prior to commencing the works. Drawing to be read in conjunction with other relevant consultant information.

Legend

This drawing is the copyright of HTA Design LLP and must not be copied or reproduced in part, or in whole, without the express permission of HTA Design LLP.  
Drawing to be read in conjunction with outline specification.



0 2 4 6 8 10 m



## S06 - Seventh Floor

drawing title

## SO6-108

drawing number

## C

revision

Notting Hill Housing Aylesbury Regeneration 1:200

client / project

scale @ A1

NHH-AES

project number

LTD

originated by

PLANNING

status

HTA Design LLP  
106-110 Kentish Town Road  
London, NW1 9PX  
020 7485 8555  
www.hta.co.uk

HTA Design LLP  
21 Slater's Steps  
Edinburgh, EH8 8PB  
0131 344 4742  
www.hta.co.uk







C 29/01/15 SNM Minor changes to the internal layout and fenestration positions  
B 13/11/14 SEW Block 6D 3BSP layout revised  
A 15/10/14 MPM Block 6B layout revised

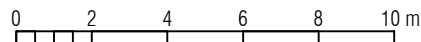
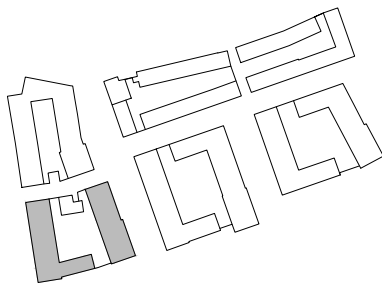
**AYLESBURY REGENERATION**  
Notting Hill Housing Group | London Borough of Southwark



Notes:  
Do not scale from drawings unless by agreement with HTA. Use figured dimensions only. Check all dimensions on site prior to commencing the works. Drawing to be read in conjunction with other relevant consultant information.

Legend

This drawing is the copyright of HTA Design LLP and must not be copied or reproduced in part, or in whole, without the express permission of HTA Design LLP.  
Drawing to be read in conjunction with outline specification.



**S06 - Eighth Floor**

drawing title

**S06-109**

drawing number

**C**

revision

**Notting Hill Housing Aylesbury Regeneration** 1:200  
client / project scale @ A1

**NHH-AES**  
project number

**LTD**  
originated by

**PLANNING**  
status

HTA Design LLP  
106-110 Kenish Town Road  
London, NW1 9PX  
020 7485 8555  
www.hta.co.uk

HTA Design LLP  
21 Slater's Steps  
Edinburgh, EH8 8PB  
0131 344 4742  
www.hta.co.uk







C 29/01/15 SNM Minor changes to the internal layout and fenestration positions  
B 13/11/14 SEW Block 6D 3B5P layout revised  
A 15/10/14 MPM Block 6B layout revised

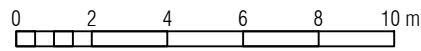
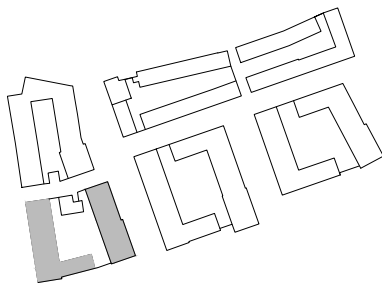
**AYLESBURY REGENERATION**  
Notting Hill Housing Group | London Borough of Southwark



Notes:  
Do not scale from drawings unless by agreement with HTA. Use figured dimensions only. Check all dimensions on site prior to commencing the works. Drawing to be read in conjunction with other relevant consultant information.

Legend

This drawing is the copyright of HTA Design LLP and must not be copied or reproduced in part, or in whole, without the express permission of HTA Design LLP.  
Drawing to be read in conjunction with outline specification.



**S06 - Ninth Floor**  
drawing title

**S06-110**  
drawing number

**C**  
revision

**Notting Hill Housing Aylesbury Regeneration**  
client / project

**NHH-AES**  
project number

**LTD**  
originated by

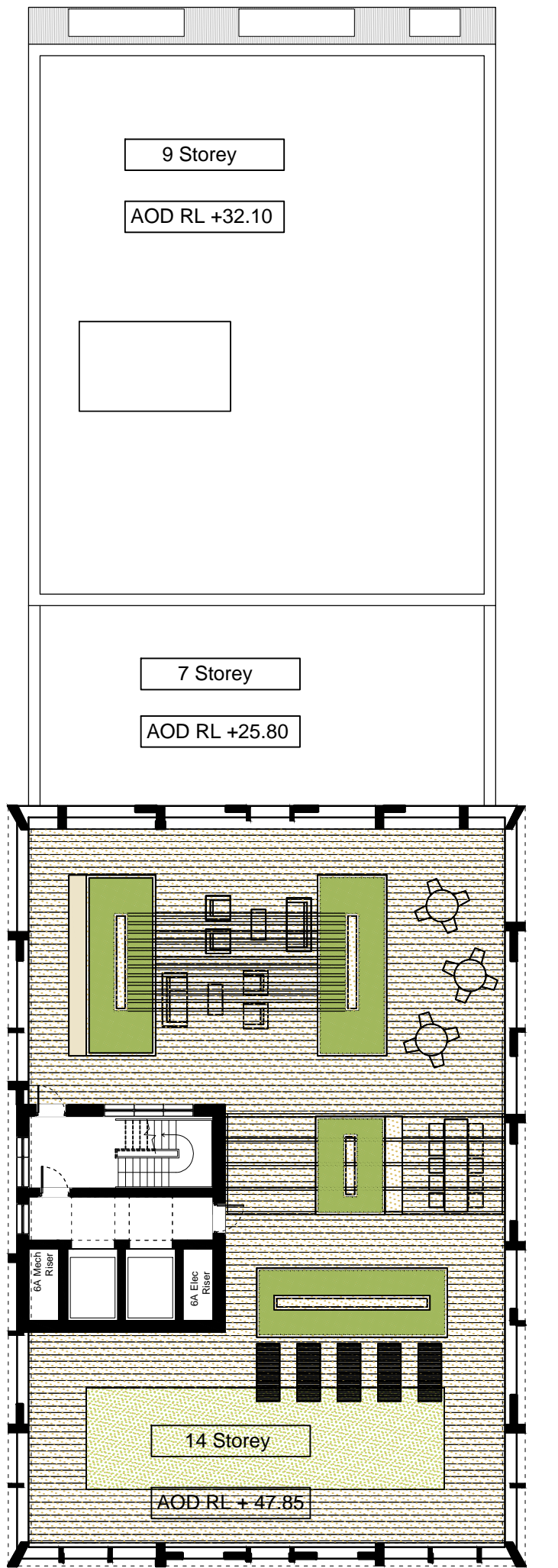
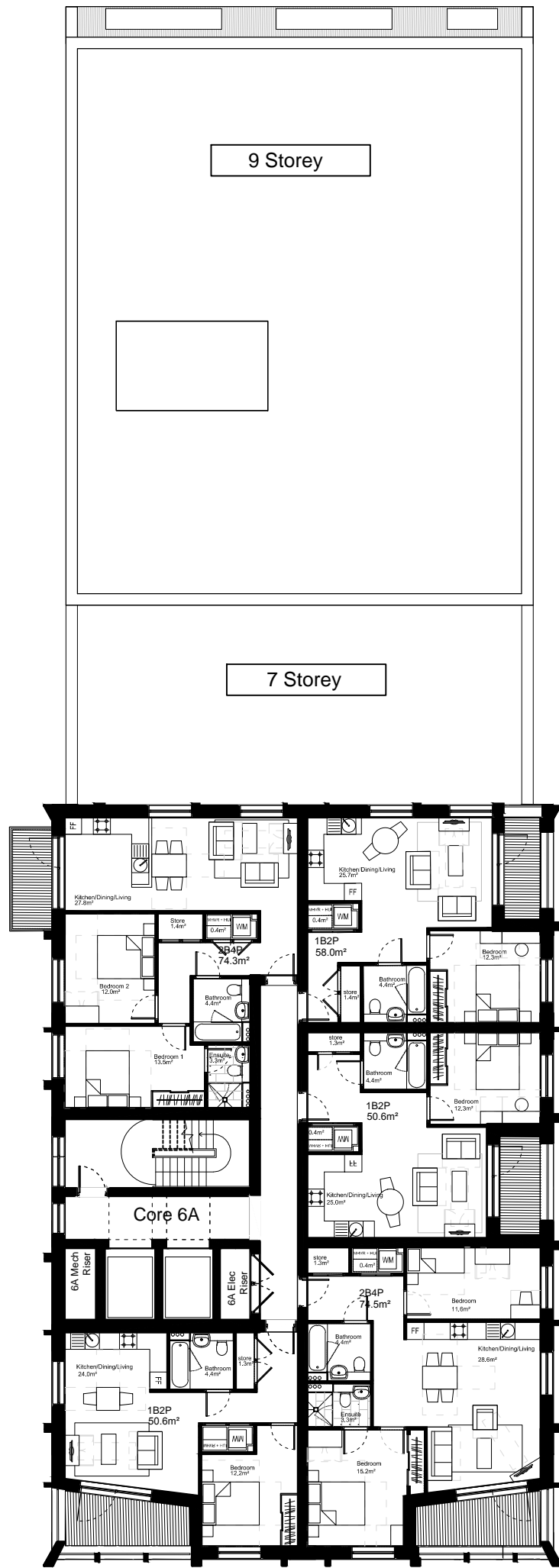
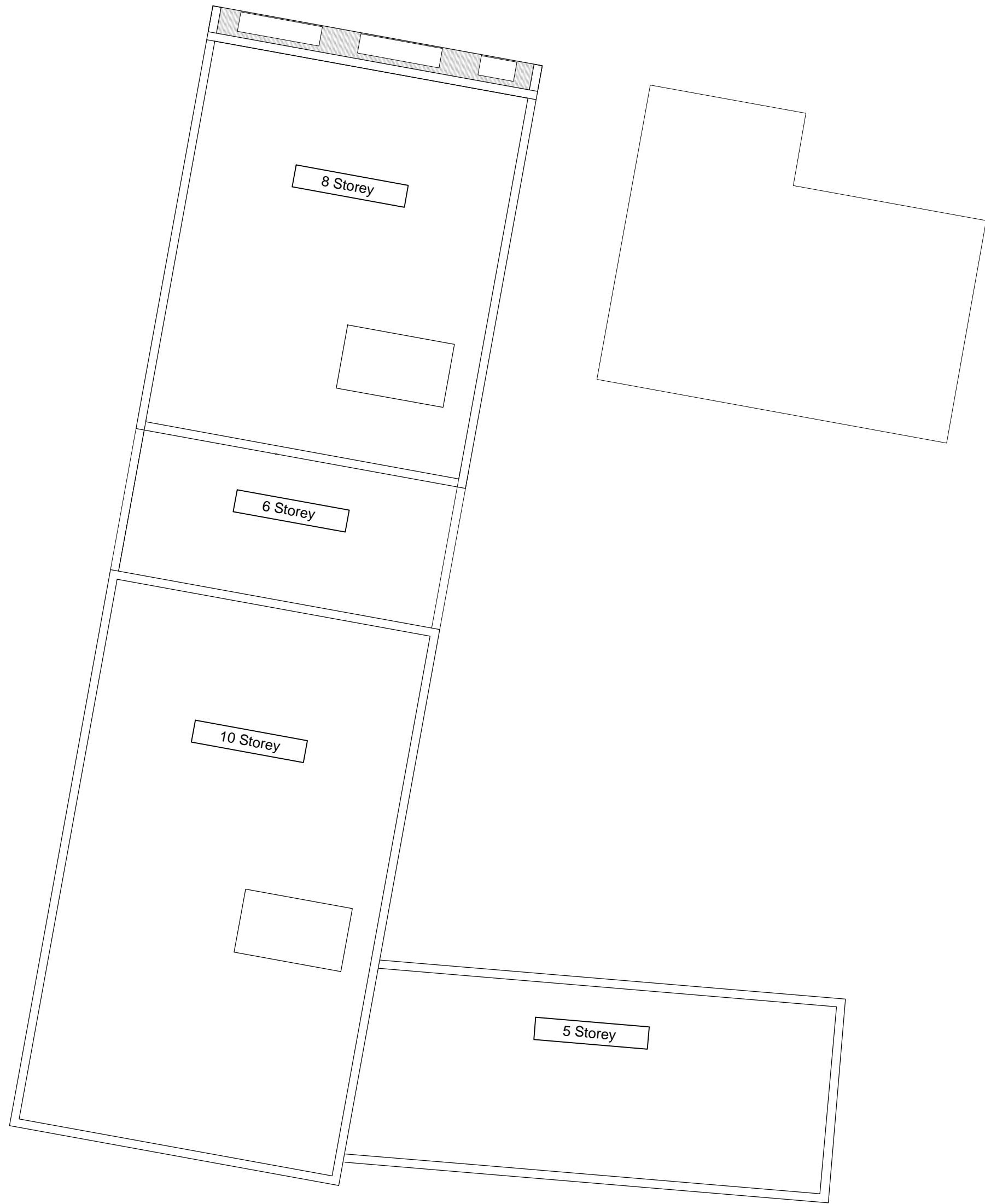
**PLANNING**  
status

HTA Design LLP  
106-110 Kentish Town Road  
London, NW1 9PX  
020 7485 8555  
www.hta.co.uk

HTA Design LLP  
21 Slater's Steps  
Edinburgh, EH8 8PB  
0131 344 4742  
www.hta.co.uk







Tenth to Thirteenth Floor

Fourteenth Floor Roof Terrace

B 29/01/15 SEW Minor changes to the internal layout and fenestration positions. AOD levels revised

A 15/10/14 MPM AOD levels revised

Rev Date Drawn Description

## AYLESBURY REGENERATION

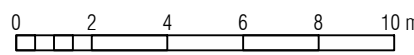
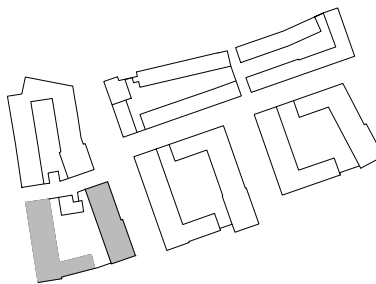
Notting Hill Housing Group | London Borough of Southwark



Notes:  
Do not scale from drawings unless by agreement with HTA. Use figured dimensions only. Check all dimensions on site prior to commencing the works. Drawing to be read in conjunction with other relevant consultant information.

Legend

This drawing is the copyright of HTA Design LLP and must not be copied or reproduced in part, or in whole, without the express permission of HTA Design LLP.  
Drawing to be read in conjunction with outline specification.



S06 - Tenth-Thirteenth Floor/Fourteenth Floor Roof Terrace

drawing title

Notting Hill Housing Aylesbury Regeneration

client / project

S06-111

drawing number

1:200

scale @ A1

B

revision

NHH-AES

project number

LTD

originated by

HTA Design LLP  
106-110 Kentish Town Road  
London, NW1 9PX  
020 7485 8555  
www.hta.co.uk

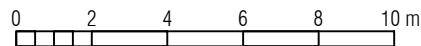
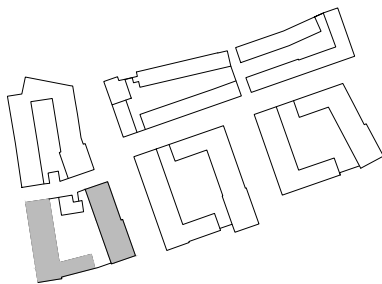
HTA Design LLP  
21 Slater's Steps  
Edinburgh, EH8 8PB  
0131 344 4742  
www.hta.co.uk



PLANNING

status





**S06 - Roof plan**

drawing title

**SO6-112**

drawing number

**A**

revision

**Notting Hill Housing Aylesbury Regeneration** 1:200  
client / project scale @ A1

**NHH-AES**  
project number

**LTD**  
originated by

**PLANNING**  
status

HTA Design LLP  
106-110 Kentish Town Road  
London, NW1 9PX  
020 7485 8555  
www.hta.co.uk

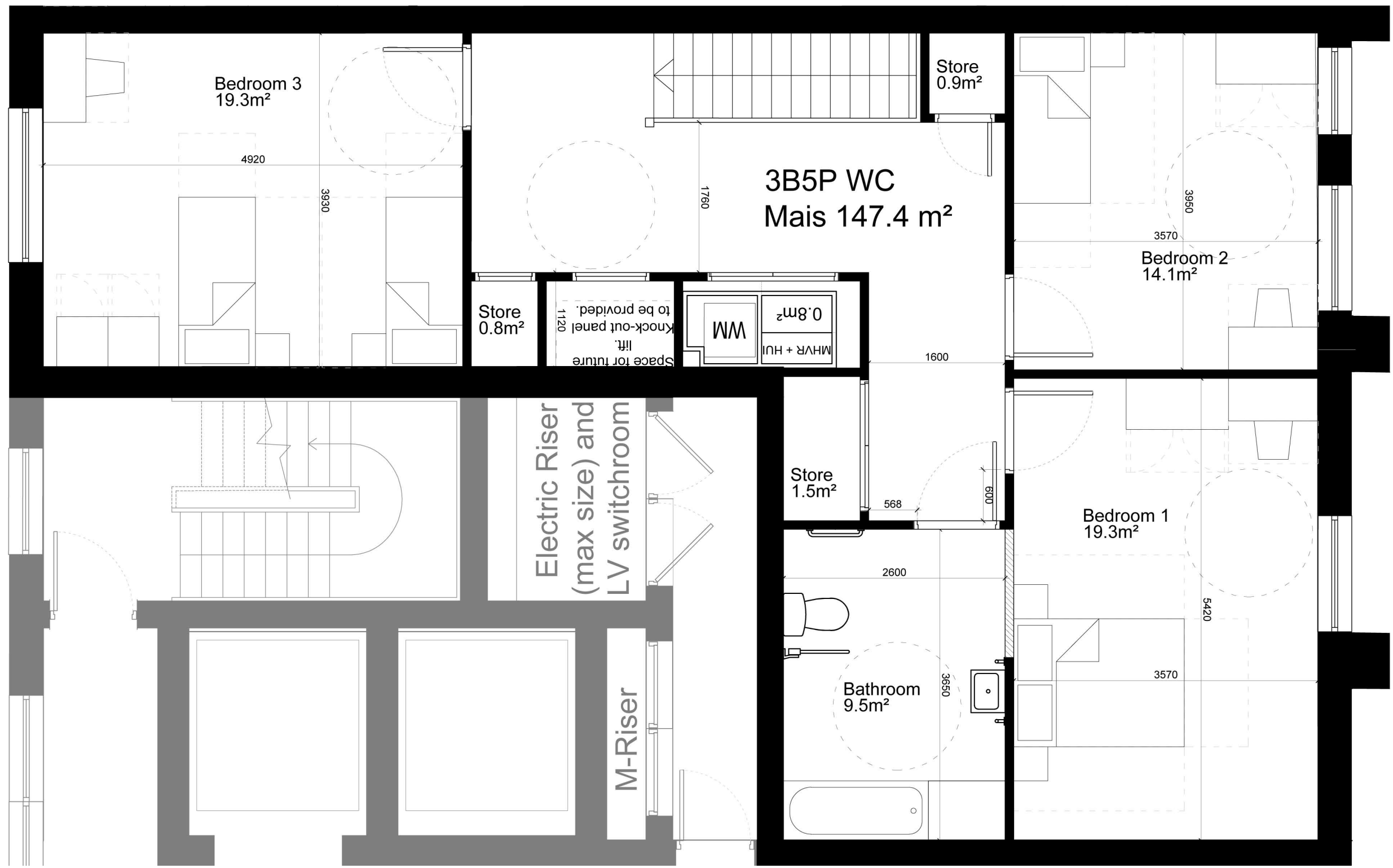
HTA Design LLP  
21 Slater's Steps  
Edinburgh, EH8 8PB  
0131 344 4742  
www.hta.co.uk







Ground Floor



First Floor

A 29/01/15 SNM layout revised

## AYLESBURY REGENERATION

Notting Hill Housing Group | London Borough of Southwark



Notes:  
Do not scale from drawings unless by agreement with HTA. Use figured dimensions only. Check all dimensions on site prior to commencing the works. Drawing to be read in conjunction with other relevant consultant information.

Legend

This drawing is the copyright of HTA Design LLP and must not be copied or reproduced in part or in whole, without the express permission of HTA Design LLP. Drawing to be read in conjunction with outline specification.

Aylesbury Redevelopment Block 6  
drawing title Unit Layout Target Rent 3B5PWC\_T1

S06X-DR\_300\_U2  
drawing number

A  
revision

Notting Hill Housing Aylesbury Regeneration  
client / project

1:50  
scale @ A1

NHH-AES  
project number

HTA  
originated by

WIP  
status

HTA Design LLP  
105-110 Kentish Town Road  
London, NW1 9PX  
020 7485 8555  
www.hta.co.uk

HTA Design LLP  
21 Slater's Steps  
Edinburgh, EH8 8PB  
0131 344 4742  
www.hta.co.uk



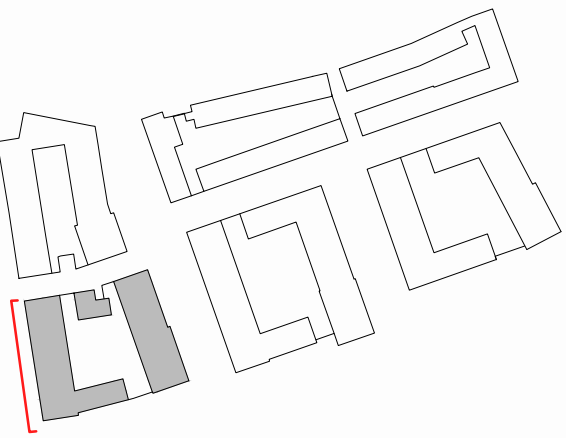










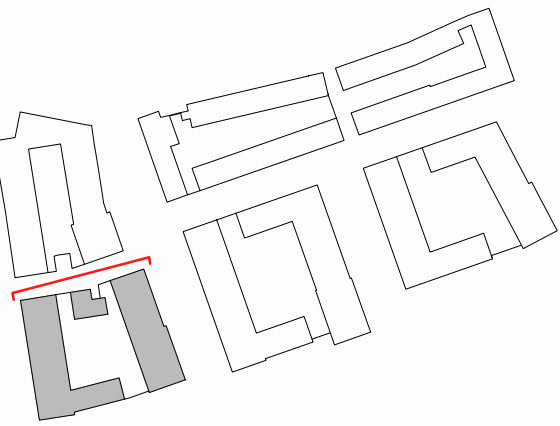


Building 6C

Building 6D

Albany Road





On street Car parking      Building 6B      Parking Bay for Wheelchair Maisonette      Gas Pressure Reduction Station Enclosure      Courtyard Access      Building 6C      On Street Bradenham Close Car parking

B	23/01/15	PMR	Changes to fenestration
A	15/10/14	PMR	Block 6B Heights Adjusted
Rev	Date	Drawn	Description

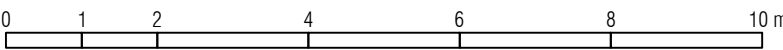
**AYLESBURY REGENERATION**  
Notting Hill Housing Group | London Borough of Southwark



**Notes:**  
Do not scale from drawings unless by agreement with HTA. Use figured dimensions only. Check all dimensions on site prior to commencing the works. Drawing to be read in conjunction with other relevant consultant information.

**Legend**  
Street trees omitted for clarity

This drawing is the copyright of HTA Design LLP and must not be copied or reproduced in part or in whole, without the express permission of HTA Design LLP. Drawing to be read in conjunction with outline specification.



**S06 - North Elevation**  
drawing title

**Notting Hill Housing Aylesbury Regeneration**  
client / project

**PLANNING**  
status

**S06-133**  
drawing number

**Scale**  
1:100 @ A1

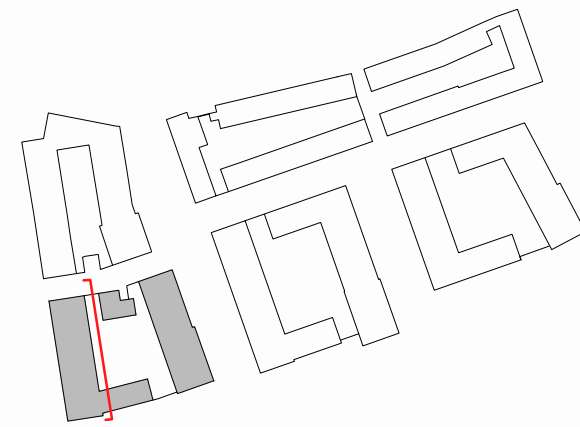
**NHH-AES**  
project number

**HTA Design LLP**  
106-110 Kentish Town Road  
London, NW1 9PX  
020 7485 8555  
www.hta.co.uk

**PMR**  
originated by

**HTA**  
HTA Design LLP  
21 Slater's Steps  
Edinburgh, EH8 8PB  
0131 344 4742  
www.hta.co.uk





A 29/01/15 PMR Minor changes to fenestration and balcony positions

# AYLESBURY REGENERATION

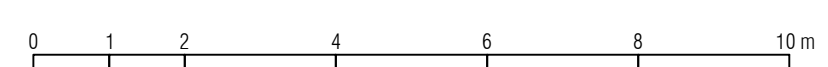
Notting Hill Housing Group | London Borough of Southwark



Notes:  
Do not scale from drawings unless by agreement with HTA. Use figured dimensions only. Check all dimensions on site prior to commencing the works. Drawing to be read in conjunction with other relevant consultant information.

This drawing is the copyright of HTA Design LLP and must not be copied or reproduced in part, or in whole, without the express permission of HTA Design LLP.  
Drawing to be read in conjunction with outline specification.

Legend



**S06 - East Elevation**  
drawing title  
Notting Hill Housing Aylesbury Regeneration  
client / project

**S06-134**  
drawing number  
1:200 @ A1

**PLANNING**  
status

**A**  
revision

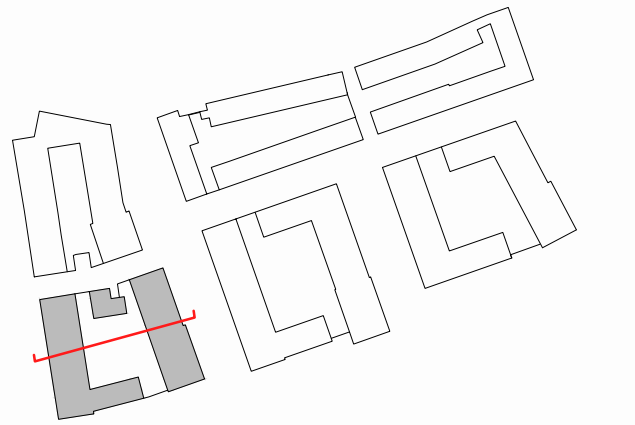
**MPM**  
originated by

**hta**

HTA Design LLP  
106-110 Kentish Town Road  
London, NW1 9PX  
020 7485 8555  
www.hta.co.uk

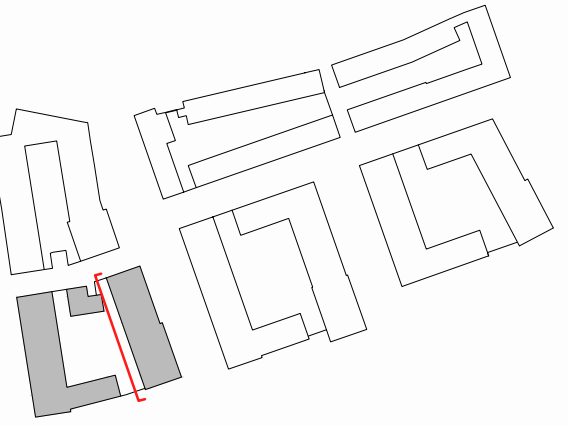
HTA Design LLP  
21 Slater's Steps  
Edinburgh, EH8 8PB  
0131 344 4742  
www.hta.co.uk





Bradenham On Street Car parking      Building 6C      Bicycle storage      Building 6B      On street Car parking

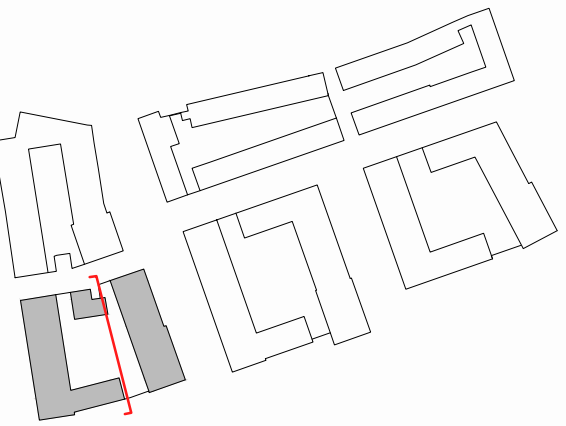












A 29/01/15 PMR Minor changes to fenestration and balcony positions

Rev Date Drawn Description

**AYLESBURY REGENERATION**  
Notting Hill Housing Group | London Borough of Southwark



Notes:  
Do not scale from drawings unless by agreement with HTA. Use figured dimensions only. Check all dimensions on site prior to commencing the works. Drawing to be read in conjunction with other relevant consultant information.

This drawing is the copyright of HTA Design LLP and must not be copied or reproduced in part, or in whole, without the express permission of HTA Design LLP. Drawing to be read in conjunction with outline specification.

Legend  
Street trees omitted for clarity



**S06 - East Elevation**  
drawing title courtyard 2

Notting Hill Housing Aylesbury Regeneration  
client / project

**PLANNING**  
status

**S06-138**  
drawing number

NHH-AES  
project number  
PMR  
originated by

HTA Design LLP  
106-110 Kentish Town Road  
London, NW1 9PX  
020 7485 8555  
www.hta.co.uk

HTA Design LLP  
21 Slater's Steps  
Edinburgh, EH8 8PB  
0131 344 4742  
www.hta.co.uk







1. Reconstituted stone cladding panel.
2. Light gold coloured metal panel
3. Reconstituted stone frame
4. Light gold coloured aluminium window frame finish
5. Light gold coloured metal framed part glazed entrance canopy with decorative signage and lighting.
6. Glazed balustrade
7. Light gold coloured decorative metal screen door to store

A 19/02/15 LTD Minor material and detail amendments

Rev Date Drawn Description

## AYLESBURY REGENERATION

Notting Hill Housing Group | London Borough of Southwark



BARRATT  
LONDON



Hawkins  
Brown



Deloitte



Notes:  
Do not scale from drawings unless by agreement with HTA. Use figured dimensions only.  
Check all dimensions on site prior to commencing the works. Drawing to be read in  
conjunction with other relevant consultant information.

This drawing is the copyright of HTA Design LLP and must not be copied or reproduced in  
part, or in whole, without the express permission of HTA Design LLP.  
Drawing to be read in conjunction with outline specification.

Legend

## S06 - Detail Elevation Study

drawing title  
6B

Notting Hill Housing

client / project

Aylesbury

## S06-140

drawing number

Scale

1:50 @ A1

NHH-AES

project number

## A

revision

MPM

originated by

PLANNING

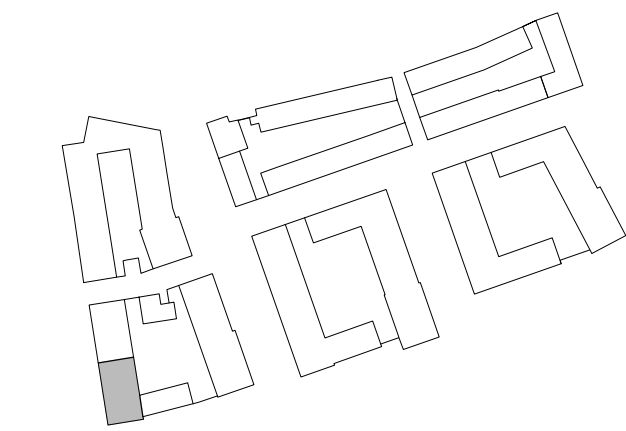
status

HTA Design LLP  
105-110 Kentish Town Road  
London, NW1 9PX  
020 7485 8555  
www.hta.co.uk

HTA Design LLP  
21 Slater's Steps  
Edinburgh, EH8 8PB  
0131 344 4742  
www.hta.co.uk







1. Brick coping - brick type 1.  
Appearance - waterstruck / red
2. Brickwork - brick type 1.  
Appearance - waterstruck / red
3. Dark sienna coloured aluminium window frame finish.
4. Dark sienna coloured projecting metal balcony with aluminium light gold secret fix fascia and soffit
5. Dark sienna coloured metal framed part glazed entrance canopy with decorative signage and lighting.
6. Reconstituted stone cladding panels to form edge detail to brick arch.
7. Glazed brick  
Appearance - dark teal
8. Dark teal coloured decorative metal screen door to store
9. Dark sienna coloured metal panels to soffit and returns of arch

A 19/02/15 LTD Minor material and detail amendments

Rev Date Drawn Description

## AYLESBURY REGENERATION

Notting Hill Housing Group | London Borough of Southwark



Notes:  
Do not scale from drawings unless by agreement with HTA. Use figured dimensions only.  
Check all dimensions on site prior to commencing the works. Drawing to be read in conjunction with other relevant consultant information.

This drawing is the copyright of HTA Design LLP and must not be copied or reproduced in part, or in whole, without the express permission of HTA Design LLP.  
Drawing to be read in conjunction with outline specification.

Legend

0 1 2m

## S06 - Detail Elevation Study

Notting Hill Housing Aylesbury  
client / project

PLANNING  
status

## S06-141

drawing number

Scale  
1:50 @ A1

HTA Design LLP  
105-110 Kentish Town Road  
London, NW1 9PX  
020 7485 8555  
www.hta.co.uk

NHH-AES  
project number

HTA Design LLP  
21 Slater's Steps  
Edinburgh, EH8 8PB  
0131 344 4742  
www.hta.co.uk

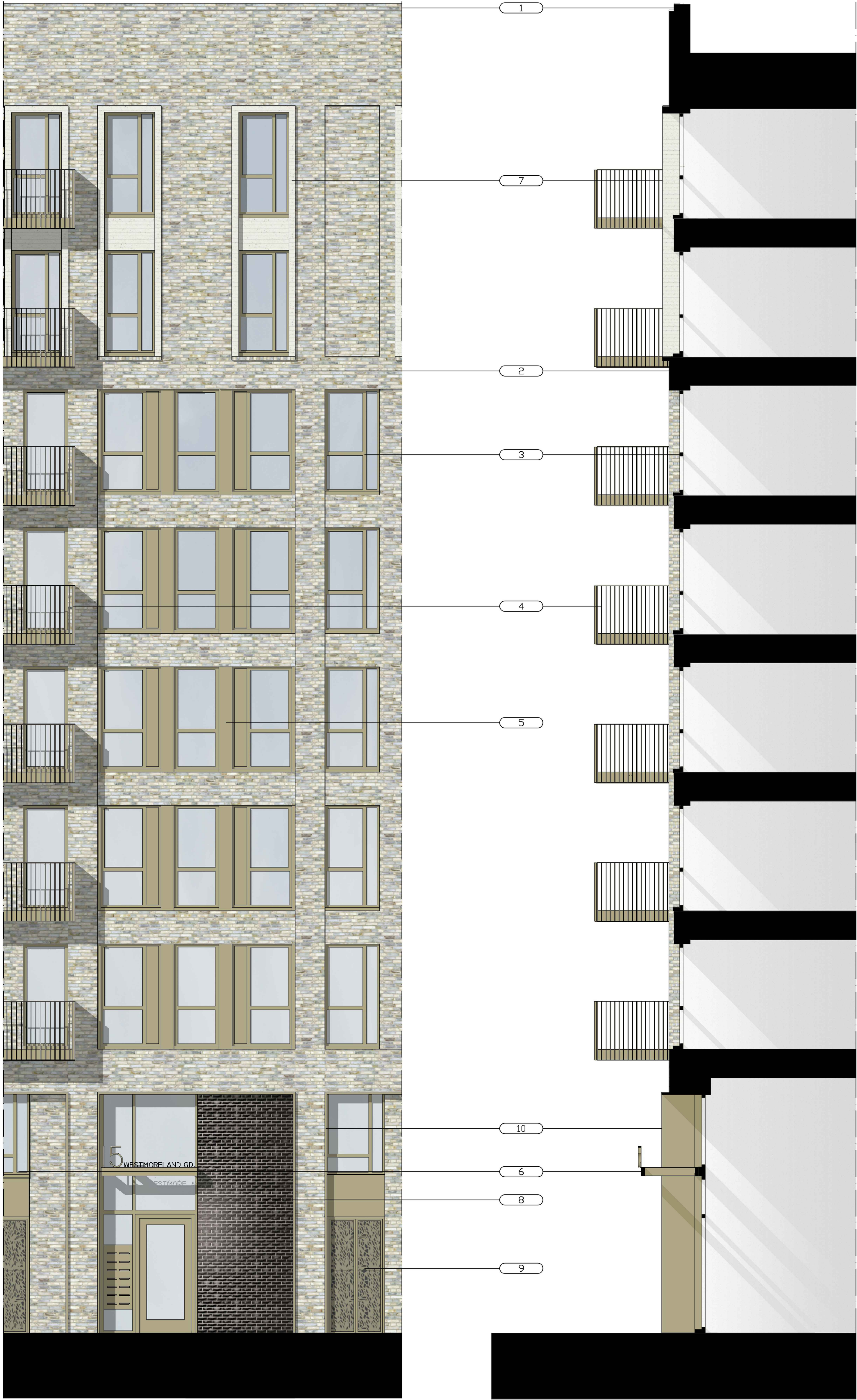
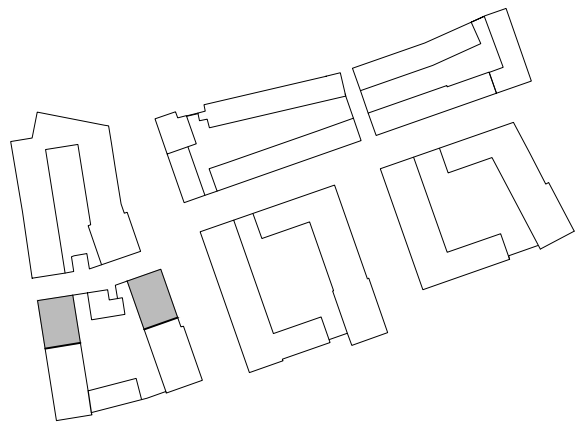
## A

revision

MPM  
originated by







1. Brick coping - brick type 3.  
Appearance - cream / silver
2. Brickwork - brick type 3.  
Appearance - cream / silver
3. Light gold coloured aluminium window  
frame finish.
4. Light gold coloured projecting metal  
balcony with aluminium light gold  
secret fix fascia and soffit
5. Light gold coloured metal panel
6. Light gold coloured metal framed part  
glazed entrance canopy with decorative  
signage and lighting
7. Reconstituted stone window surround
8. Glazed brick  
Appearance - black
9. Light gold coloured decorative metal  
screen door to store
10. Light gold coloured metal panels to  
soffit and returns of arch

A 19/02/15 LTD Minor material and detail amendments

Rev Date Drawn Description

## AYLESBURY REGENERATION

Notting Hill Housing Group | London Borough of Southwark



Notes:  
Do not scale from drawings unless by agreement with HTA. Use figured dimensions only.  
Check all dimensions on site prior to commencing the works. Drawing to be read in  
conjunction with other relevant consultant information.

This drawing is the copyright of HTA Design LLP and must not be copied or reproduced in  
part, or in whole, without the express permission of HTA Design LLP.  
Drawing to be read in conjunction with outline specification.

Legend

0 0.5 1.0 1.5 2.0 m

### S06 - Detail Elevation Study

drawing title 6B

Notting Hill Housing Aylesbury  
client / project

PLANNING  
status

### S06-142

drawing number

Scale  
1:50 @ A1

HTA Design LLP  
105-110 Kentish Town Road  
London, NW1 9PX  
020 7485 8555  
www.hta.co.uk

NHH-AES  
project number

HTA Design LLP  
21 Slater's Steps  
Edinburgh, EH8 8PB  
0131 344 4742  
www.hta.co.uk

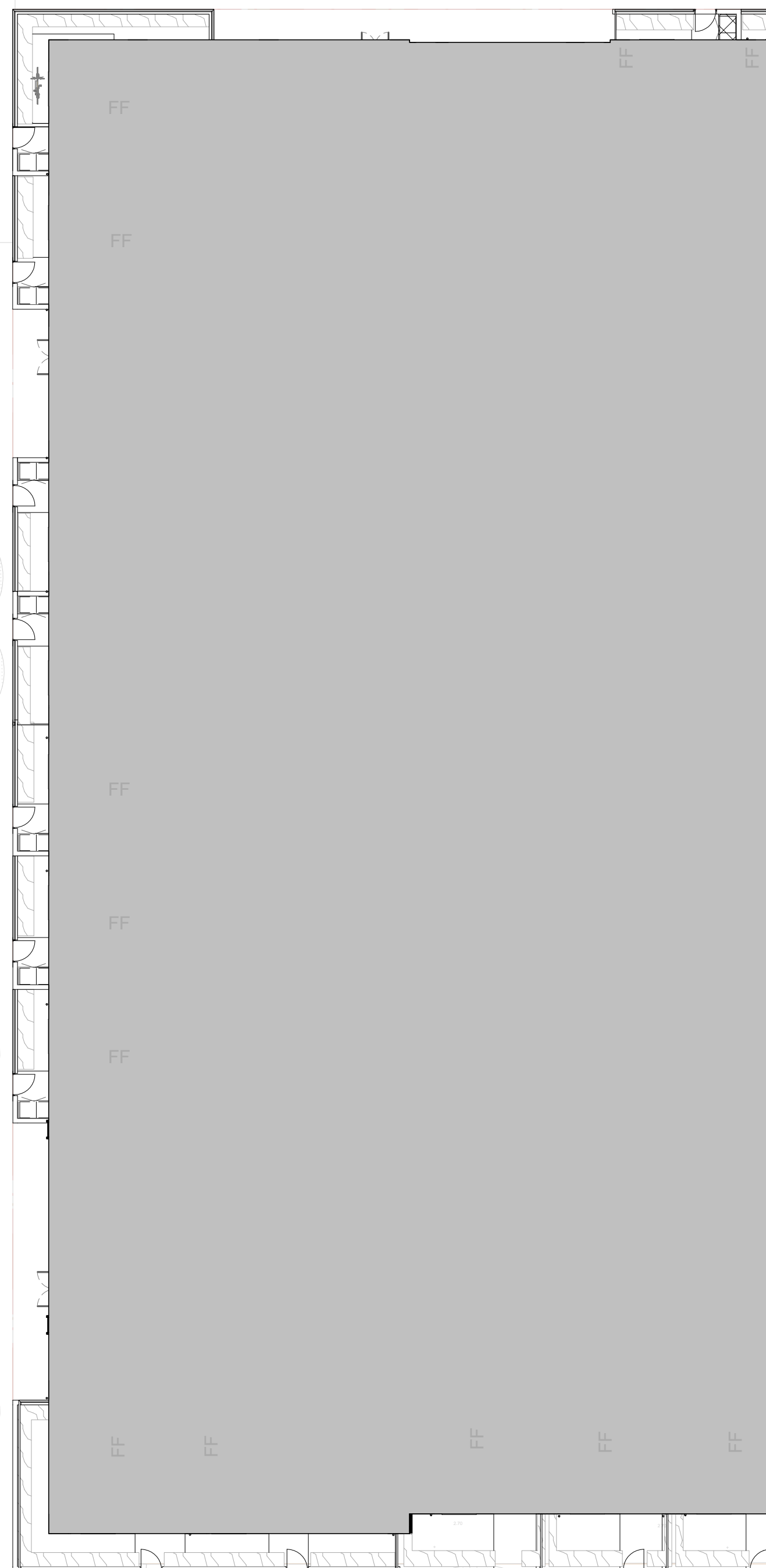
### A

revision

MPM  
originated by







Bradenham Close

Westmoreland Green

Albany Road

**Notes: -**

Do not scale from drawings unless by agreement with HTA. Use figured dimensions only. Check all dimensions on site prior to commencing the works.

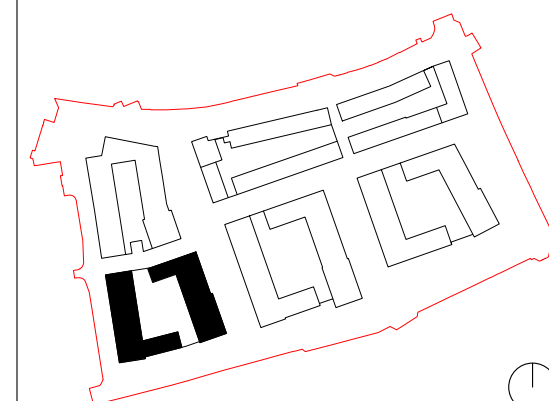
Drawing to be read in conjunction with other relevant consultant information.

This drawing is the copyright of HTA Design LLP, and must not be copied or reproduced in part, or in whole, without the express permission of HTA Design LLP.

This drawing is not for construction purposes and shows design intent only.

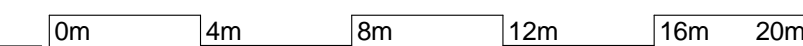
S5-1

S0X-X-XX.00	Unit Reference -
S0X-X-XXBP-X-X	Block-Core-Level.Unit
XX sqm	Block-Core-UnitSize-UnitType
(XX sqm)	Area at Shown Floor
	Total Target Area



B

revision

drawn  
LTD

106-110 Kentish Town Road London UK NW1 9PX  
P (020) 7485 8555 F (020) 7485 1232 info@hta.co.uk

## For Planning









rev	date	drawn	description	
-			Initial Application	
A	13/1/14		Block 60 385P layout revised	
B	28/01/15		Minor changes to the internal layout and fenestration positions	
C	27/09/17		Section 73 Application	

Notes: -

Do not scale from drawings unless by agreement with HTA. Use figured dimensions only. Check all dimensions on site prior to commencing the works. Drawing to be read in conjunction with other relevant consultant information.

This drawing is the copyright of HTA Design LLP, and must not be copied or reproduced in part, or in whole, without the express permission of HTA Design LLP.

This drawing is not for construction purposes and shows design intent only.

Legend:

SS-1

S0X-X-XX.00  
S0X-X-XBXP-X-X  
XX sqm  
(XX sqm)

Grid Reference - S5 = Block; 1 = Grid reference

Unit Reference -  
Block-Core-Level/Unit  
Block-Core-Unit/Size-Unit/Type  
Area at Shown Floor  
Total Target Area

Second Floor

NHH-FDS\_HTA-A\_DR\_S06-103

C

drawing title	drawing number	revision
client / job name	job reference	scale
Notting Hill Housing Aylesbury FDS S05 & S06	NHH-FDS	1 : 200 @ A1
		LTD





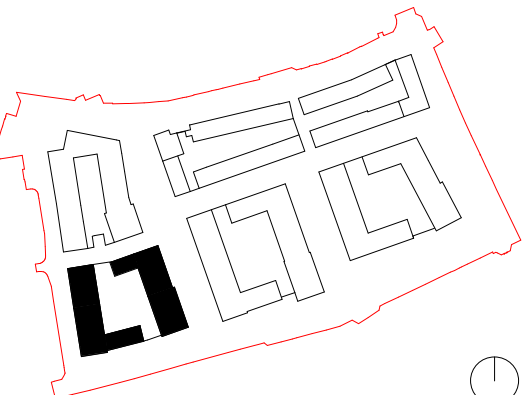
rev	date	drawn	description		Notes: -		Legend:		Third Floor		NHH-FDS_HTA-A_DR_S06-104		C	
-			Initial Application		Do not scale from drawings unless by agreement with HTA. Use figured dimensions only. Check all dimensions on site prior to commencing the works. Drawing to be read in conjunction with other relevant consultant information.		SS-1 Grid Reference - S5 = Block; 1 = Grid reference		drawing title		drawing number		revision	
A	13/11/14		Block 60 385P layout revised		This drawing is the copyright of HTA Design LLP, and must not be copied or reproduced in part, or in whole, without the express permission of HTA Design LLP.		S0X-X-XX.00 Unit Reference - Block-Core-Level Unit S0X-X-XBXP-X-X Block-Core-UnitSize-UnitType XX sqm Area at Shown Floor (XX sqm) Total Target Area		client / job name		job reference		scale	
B	28/01/15		Minor changes to the internal layout and fenestration positions		This drawing is not for construction purposes and shows design intent only.				Notting Hill Housing		NHH-FDS		1 : 200 @ A1	
C	27/09/17		Section 73 Application						Aylesbury FDS S05 & S06				LTD	
									0m 4m 8m 12m 16m 20m					
									hta		106-110 Kentish Town Road London UK NW1 9PX P (020) 7485 8555 F (020) 7485 1232 info@hta.co.uk		For Planning	






rev	date	drawn	description			Notes: -			Legend:			Fourth Floor			NHH-FDS_HTA-A_DR_S06-105			C		
-			Initial Application			Do not scale from drawings unless by agreement with HTA. Use figured dimensions only. Check all dimensions on site prior to commencing the works. Drawing to be read in conjunction with other relevant consultant information.			SS-1			drawing title			drawing number			revision		
A	13/11/14		Block 60 385P layout revised			This drawing is the copyright of HTA Design LLP, and must not be copied or reproduced in part, or in whole, without the express permission of HTA Design LLP.			S0X-X-XX.00			client / job name			job reference			drawn		
B	28/01/15		Minor changes to the internal layout and fenestration positions			This drawing is not for construction purposes and shows design intent only.			S0X-X-XBXP-X-X			Notting Hill Housing			NHH-FDS			LTD		
C	27/09/17		Section 73 Application						XX sqm			Aylesbury FDS S05 & S06			1 : 200 @ A1					
									(XX sqm)						0m 4m 8m 12m 16m 20m					
									Unit Reference -			hta			106-110 Kentish Town Road London UK NW1 9PX			For Planning		
									Block-Core-Level Unit			P (020) 7485 8555 F (020) 7485 1232 info@hta.co.uk								
									Block-Core-UnitSize-UnitType											
									Area at Shown Floor											
									Total Target Area											





<b>Fifth Floor</b>		<b>NHH-FDS_HTA-A_DR_S06-106</b>		<b>D</b>
drawing title	drawing number		revision	
client / job name	job reference	scale	drawn	
<b>Notting Hill Housing</b>	<b>NHH-FDS</b>	<b>1 : 200 @ A1</b>	<b>LTD</b>	
<b>Aylesbury FDS S05 &amp; S06</b>				
				





rev	date	drawn	description			drawing title	drawing number	revision
-			Initial Application			Sixth Floor	NHH-FDS_HTA-A_DR_S06-107	D
A	15/10/14		Block 66 layout revised					
B	13/11/14		Block 60 SSDF layout revised					
C	29/01/15		Minor changes to the internal layout and fenestration positions					
D	27/09/17		Section 73 Application					

Notes: -			
Do not scale from drawings unless by agreement with HTA. Use figured dimensions only. Check all dimensions on site prior to commencing the works. Drawing to be read in conjunction with other relevant consultant information.			
This drawing is the copyright of HTA Design LLP, and must not be copied or reproduced in part, or in whole, without the express permission of HTA Design LLP.			
This drawing is not for construction purposes and shows design intent only.			

Legend:			
SS-1	Grid Reference - S5 = Block; 1 = Grid reference		
S0X-X-XX.00	Unit Reference - Block-Core-Level Unit		
S0X-X-XBXP-X-X	Block-Core-UnitSize-UnitType		
XX sqm	Area at Shown Floor		
(XX sqm)	Total Target Area		

--	--

client / job name	job reference	scale	drawn
Notting Hill Housing Aylesbury FDS S05 & S06	NHH-FDS	1 : 200 @ A1	LTD
		For Planning	
		106-110 Kentish Town Road London UK NW1 9PX P (020) 7485 8555 F (020) 7485 1232 info@hta.co.uk	



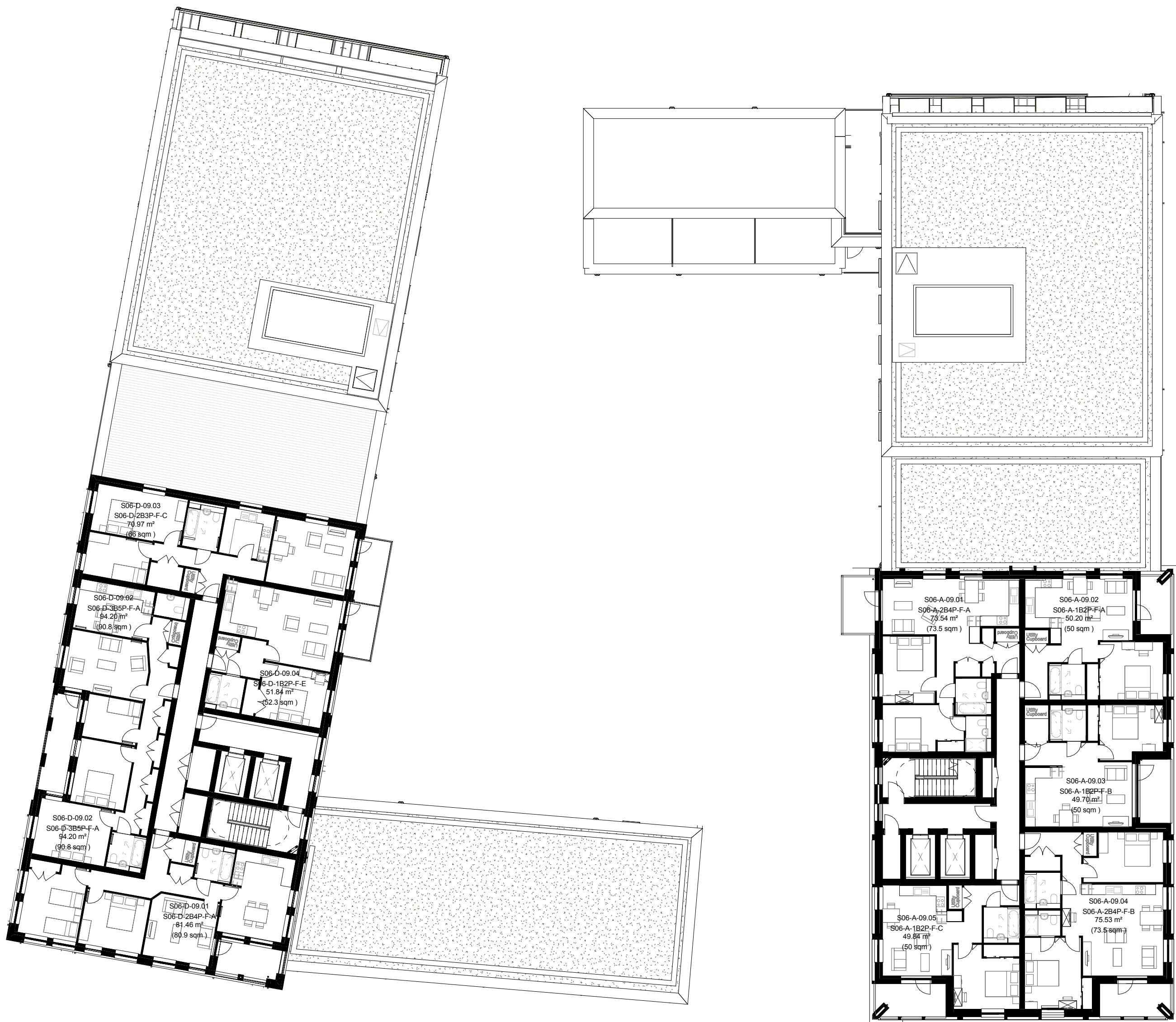






rev	date	drawn	description			Notes: -			Legend:			Eighth Floor			NHH-FDS_HTA-A_DR_S06-109			D		
-			Initial Application			Do not scale from drawings unless by agreement with HTA. Use figured dimensions only. Check all dimensions on site prior to commencing the works. Drawing to be read in conjunction with other relevant consultant information.			SS-1			drawing title			drawing number			revision		
A	15/10/14		Block 68 layout revised			This drawing is the copyright of HTA Design LLP, and must not be copied or reproduced in part, or in whole, without the express permission of HTA Design LLP.			S0X-X-XX.00			client / job name			job reference			drawn		
B	15/11/14		Block 60 SSDF layout revised			This drawing is not for construction purposes and shows design intent only.			S0X-X-XBXP-X-X			Notting Hill Housing			NHH-FDS			LTD		
C	29/01/15		Minor changes to the internal layout and fenestration positions						XX sqm			Aylesbury FDS S05 & S06			1 : 200 @ A1					
D	27/09/17		Section 73 Application						(XX sqm)						0m 4m 8m 12m 16m 20m					
									Unit Reference -			hta			106-110 Kentish Town Road London UK NW1 9PX			For Planning		
									Block-Core-Level Unit			P (020) 7485 8555 F (020) 7485 1232 info@hta.co.uk								
									Block-Core-UnitSize-UnitType											
									Area at Shown Floor											
									Total Target Area											



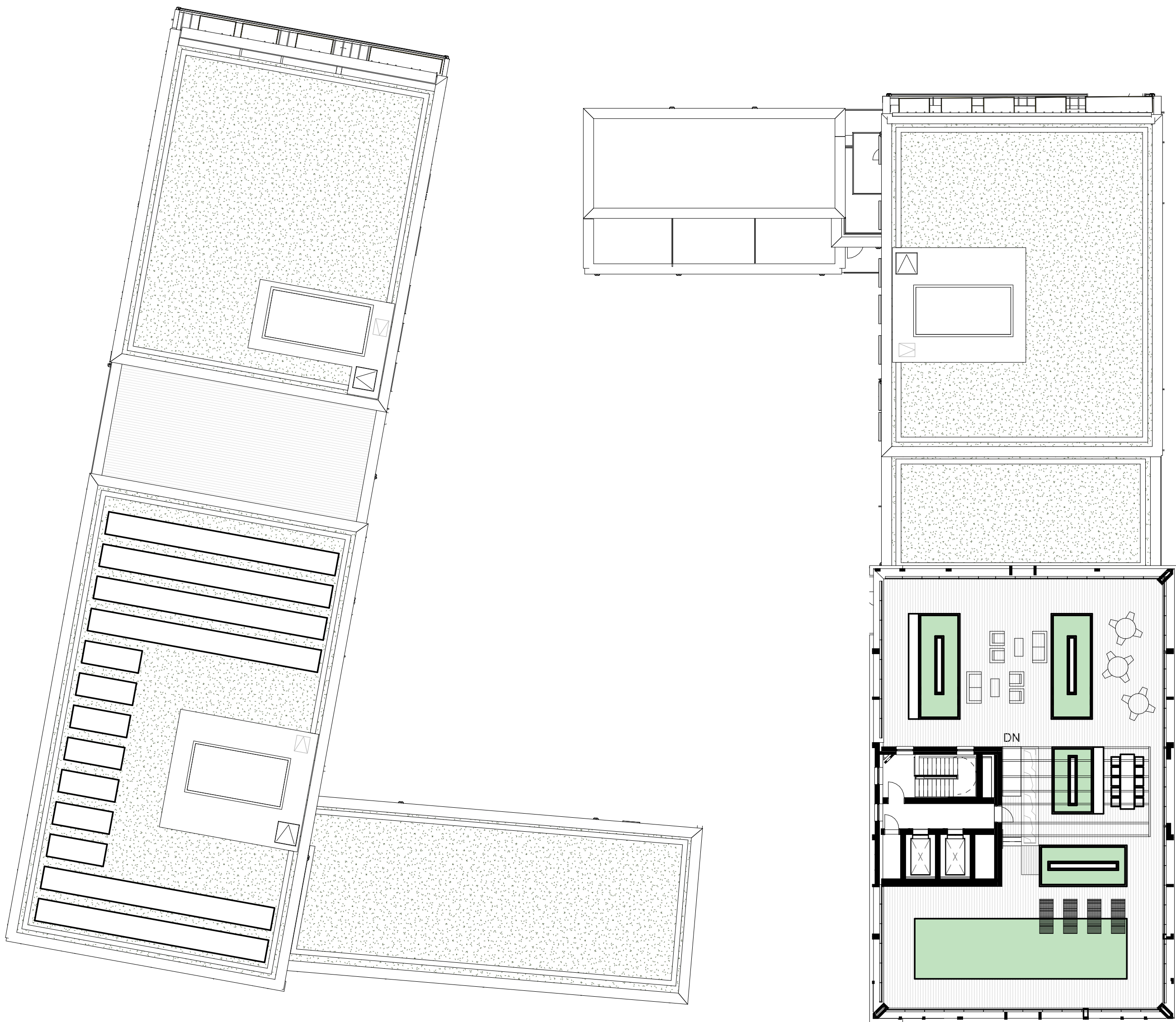


rev	date	drawn	description			Notes: -			Legend:			Ninth Floor			NHH-FDS_HTA-A_DR_S06-110			D		
-			Initial Application			Do not scale from drawings unless by agreement with HTA. Use figured dimensions only. Check all dimensions on site prior to commencing the works. Drawing to be read in conjunction with other relevant consultant information.			SS-1			drawing title			drawing number			revision		
A	15/10/14		Block 68 layout revised			This drawing is the copyright of HTA Design LLP, and must not be copied or reproduced in part, or in whole, without the express permission of HTA Design LLP.			S0X-X-XX.00			client / job name			job reference			scale		
B	15/11/14		Block 60 SSDF layout revised			This drawing is not for construction purposes and shows design intent only.			S0X-X-XBXP-X-X			Notting Hill Housing			NHH-FDS			1 : 200 @ A1		
C	29/01/15		Minor changes to the internal layout and fenestration positions						XX sqm			Aylesbury FDS S05 & S06						drawn		
D	27/09/17		Section 73 Application						(XX sqm)						0m4m8m12m16m20m			LTD		
									Unit Reference -			hta			106-110 Kentish Town Road London UK NW1 9PX			For Planning		
									Block-Core-Level Unit			P (020) 7485 8555 F (020) 7485 1232 info@hta.co.uk								
									Block-Core-UnitSize-UnitType											
									Area at Shown Floor											
									Total Target Area											









rev	date	drawn	description			Notes: -			Legend:			Roof Plan			NHH-FDS_HTA-A_DR_S06-112			B		
-			Initial Application			Do not scale from drawings unless by agreement with HTA. Use figured dimensions only. Check all dimensions on site prior to commencing the works. Drawing to be read in conjunction with other relevant consultant information.			SS-1			drawing title			drawing number			revision		
A	29/01/15		Minor changes to the internal layout and fenestration positions			This drawing is the copyright of HTA Design LLP, and must not be copied or reproduced in part, or in whole, without the express permission of HTA Design LLP.			S0X-X-XX.00			client / job name			job reference			scale		
B	27/09/17		Section 73 Application			This drawing is not for construction purposes and shows design intent only.			S0X-X-XBXP-X-X			Notting Hill Housing			NHH-FDS			1 : 200 @ A1		
									XX sqm			Aylesbury FDS S05 & S06						LTD		
									(XX sqm)						0m4m8m12m16m20m					
									Unit Reference -			hta			106-110 Kentish Town Road London UK NW1 9PX			For Planning		
									Block-Core-Level Unit			P (020) 7485 8555 F (020) 7485 1232 info@hta.co.uk								
									Block-Core-UnitSize-UnitType											
									Area at Shown Floor											
									Total Target Area											





<table><tr><th>rev</th><th>date</th><th>drawn</th><th>description</th></tr><tr><td>-</td><td></td><td></td><td>Initial Application</td></tr><tr><td>A</td><td>15/10/14</td><td></td><td>Block 68 Heights Adjusted</td></tr><tr><td>B</td><td>29/01/15</td><td></td><td>Minor changes to the internal layout and fenestration positions</td></tr><tr><td>C</td><td>27/09/17</td><td></td><td>Section 73 Application</td></tr><tr><td>D</td><td>25/10/17</td><td>AWF</td><td>Section 73 Application Amendments</td></tr></table> <p><b>Notes:</b> -</p> <p>Do not scale from drawings unless by agreement with HTA. Use figured dimensions only. Drawing to be read in conjunction with other relevant consultant information. This drawing is the copyright of HTA Design LLP, and must not be copied or reproduced in part, or in whole, without the express permission of HTA Design LLP.</p> <p>This Tender drawing/document describes HTA Design LLP's concept design intent to be achieved by the Design and Build Contractor and any construction proposals shown hereon are indicative only. The detailed design resolution and specification of the construction, including the selection and specification of materials and finishes, shall be carried out by the Design and Build Contractor and/or their appointed design consultants and/or specialist subcontractors to achieve the design intent and shall comply with the Employer's Requirements and the requirements of the Building Regulations, the CDM Regulations 2015 and any other relevant health and safety legislation and follow the guidance in any associated approved documents.</p>	rev	date	drawn	description	-			Initial Application	A	15/10/14		Block 68 Heights Adjusted	B	29/01/15		Minor changes to the internal layout and fenestration positions	C	27/09/17		Section 73 Application	D	25/10/17	AWF	Section 73 Application Amendments	<p><b>Legend:</b></p>	<div></div>	<table><tr><td colspan="2"><b>East Elevation</b></td><td colspan="2"><b>NHH-FDS_HTA-A_DR_S06-130</b></td><td><b>D</b></td></tr><tr><td colspan="2">drawing title</td><td colspan="2">drawing number</td><td>revision</td></tr><tr><td colspan="2">client / job name</td><td>job reference</td><td>scale</td><td>drawn</td></tr><tr><td colspan="2"><b>Notting Hill Housing</b></td><td><b>NHH-FDS</b></td><td><b>1 : 100 @ A1</b></td><td><b>MGS</b></td></tr><tr><td colspan="2"><b>Aylesbury FDS S05 &amp; S06</b></td><td colspan="3"></td></tr><tr><td colspan="2"></td><td colspan="3"><div><div>0m2m4m6m8m10m</div></div></td></tr><tr><td colspan="2"></td><td colspan="3"><div>105-110 Kentish Town Road London UK NW1 9PX P (020) 7485 8555 F (020) 7485 1232 info@hta.co.uk</div><div><b>For Planning</b></div></td></tr></table>	<b>East Elevation</b>		<b>NHH-FDS_HTA-A_DR_S06-130</b>		<b>D</b>	drawing title		drawing number		revision	client / job name		job reference	scale	drawn	<b>Notting Hill Housing</b>		<b>NHH-FDS</b>	<b>1 : 100 @ A1</b>	<b>MGS</b>	<b>Aylesbury FDS S05 &amp; S06</b>							<div><div>0m2m4m6m8m10m</div></div>					<div>105-110 Kentish Town Road London UK NW1 9PX P (020) 7485 8555 F (020) 7485 1232 info@hta.co.uk</div> <div><b>For Planning</b></div>		
rev	date	drawn	description																																																											
-			Initial Application																																																											
A	15/10/14		Block 68 Heights Adjusted																																																											
B	29/01/15		Minor changes to the internal layout and fenestration positions																																																											
C	27/09/17		Section 73 Application																																																											
D	25/10/17	AWF	Section 73 Application Amendments																																																											
<b>East Elevation</b>		<b>NHH-FDS_HTA-A_DR_S06-130</b>		<b>D</b>																																																										
drawing title		drawing number		revision																																																										
client / job name		job reference	scale	drawn																																																										
<b>Notting Hill Housing</b>		<b>NHH-FDS</b>	<b>1 : 100 @ A1</b>	<b>MGS</b>																																																										
<b>Aylesbury FDS S05 &amp; S06</b>																																																														
		<div><div>0m2m4m6m8m10m</div></div>																																																												
		<div>105-110 Kentish Town Road London UK NW1 9PX P (020) 7485 8555 F (020) 7485 1232 info@hta.co.uk</div> <div><b>For Planning</b></div>																																																												





<table><tr><th>rev</th><th>date</th><th>drawn</th><th>description</th></tr><tr><td>-</td><td></td><td></td><td>Initial Application</td></tr><tr><td>A</td><td>29/01/15</td><td></td><td>Minor changes to the internal layout and fenestration positions</td></tr><tr><td>B</td><td>27/09/17</td><td>AWF</td><td>Section 73 Application</td></tr><tr><td>C</td><td>29/10/17</td><td>AWF</td><td>Section 73 Application Amendments</td></tr></table> <p>Notes: -</p> <p>Do not scale from drawings unless by agreement with HTA. Use figured dimensions only. Drawing to be read in conjunction with other relevant consultant information. This drawing is the copyright of HTA Design LLP, and must not be copied or reproduced in part, or in whole, without the express permission of HTA Design LLP.</p> <p>This Tender drawing/document describes HTA Design LLP's concept design intent to be achieved by the Design and Build Contractor and any construction proposals shown hereon are indicative only. The detailed design resolution and specification of the construction, including the selection and specification of materials and finishes, shall be carried out by the Design and Build Contractor and/or their appointed design consultants and/or specialist subcontractors to achieve the design intent and shall comply with the Employer's Requirements and the requirements of the Building Regulations, the CDM Regulations 2015 and any other relevant health and safety legislation and follow the guidance in any associated approved documents.</p>	rev	date	drawn	description	-			Initial Application	A	29/01/15		Minor changes to the internal layout and fenestration positions	B	27/09/17	AWF	Section 73 Application	C	29/10/17	AWF	Section 73 Application Amendments	<p>Legend:</p>		<table><tr><td colspan="2"><b>South Elevation</b></td><td colspan="2"><b>NHH-FDS_HTA-A_DR_S06-131</b></td><td><b>C</b></td></tr><tr><td colspan="2">drawing title</td><td colspan="2">drawing number</td><td>revision</td></tr><tr><td colspan="2">client / job name</td><td>job reference</td><td>scale</td><td>drawn</td></tr><tr><td colspan="2"><b>Notting Hill Housing Aylesbury FDS S05 &amp; S06</b></td><td><b>NHH-FDS</b></td><td><b>1 : 100 @ A1</b></td><td><b>MGS</b></td></tr><tr><td colspan="2"></td><td colspan="2">0m 2m 4m 6m 8m 10m</td><td></td></tr><tr><td colspan="2"></td><td colspan="2">106-110 Kentish Town Road London UK NW1 9PX P (020) 7485 8555 F (020) 7485 1232 info@hta.co.uk</td><td><b>For Planning</b></td></tr></table>	<b>South Elevation</b>		<b>NHH-FDS_HTA-A_DR_S06-131</b>		<b>C</b>	drawing title		drawing number		revision	client / job name		job reference	scale	drawn	<b>Notting Hill Housing Aylesbury FDS S05 &amp; S06</b>		<b>NHH-FDS</b>	<b>1 : 100 @ A1</b>	<b>MGS</b>			0m 2m 4m 6m 8m 10m					106-110 Kentish Town Road London UK NW1 9PX P (020) 7485 8555 F (020) 7485 1232 info@hta.co.uk		<b>For Planning</b>
rev	date	drawn	description																																																		
-			Initial Application																																																		
A	29/01/15		Minor changes to the internal layout and fenestration positions																																																		
B	27/09/17	AWF	Section 73 Application																																																		
C	29/10/17	AWF	Section 73 Application Amendments																																																		
<b>South Elevation</b>		<b>NHH-FDS_HTA-A_DR_S06-131</b>		<b>C</b>																																																	
drawing title		drawing number		revision																																																	
client / job name		job reference	scale	drawn																																																	
<b>Notting Hill Housing Aylesbury FDS S05 &amp; S06</b>		<b>NHH-FDS</b>	<b>1 : 100 @ A1</b>	<b>MGS</b>																																																	
		0m 2m 4m 6m 8m 10m																																																			
		106-110 Kentish Town Road London UK NW1 9PX P (020) 7485 8555 F (020) 7485 1232 info@hta.co.uk		<b>For Planning</b>																																																	





FFL 34.500 m  
Level 10

FFL 31.350 m  
Level 9

FFL 28.200 m  
Level 8

FFL 25.050 m  
Level 7

FFL 21.900 m  
Level 6

FFL 18.750 m  
Level 5





FFL 15.600 m  
Level 4

FFL 12.450 m  
Level 3

FFL 9.300 m  
Level 2

FFL 6.150 m  
Level 1

FFL 2.850 m  
Level 0

<table><tr><th>rev</th><th>date</th><th>drawn</th><th>description</th></tr><tr><td>-</td><td></td><td></td><td>Initial Application</td></tr><tr><td>A</td><td>29/01/15</td><td></td><td>Minor changes to the internal layout and fenestration positions</td></tr><tr><td>B</td><td>27/09/17</td><td></td><td>Section 73 Application</td></tr></table> <p>Notes: -</p> <p>Do not scale from drawings unless by agreement with HTA. Use figured dimensions only. Check all dimensions on site prior to commencing the works. Drawing to be read in conjunction with other relevant consultant information.</p> <p>This drawing is the copyright of HTA Design LLP, and must not be copied or reproduced in part, or in whole, without the express permission of HTA Design LLP.</p> <p>This drawing is not for construction purposes and shows design intent only.</p>	rev	date	drawn	description	-			Initial Application	A	29/01/15		Minor changes to the internal layout and fenestration positions	B	27/09/17		Section 73 Application	<p>Legend:</p>	<div></div>	<table><tr><td colspan="2"><b>West Elevation</b></td><td colspan="2"><b>NHH-FDS_HTA-A_DR_S06-132</b></td><td><b>B</b></td></tr><tr><td colspan="2">drawing title</td><td colspan="2">drawing number</td><td>revision</td></tr><tr><td colspan="2">client / job name</td><td>job reference</td><td>scale</td><td>drawn</td></tr><tr><td colspan="2"><b>Notting Hill Housing</b></td><td><b>NHH-FDS</b></td><td><b>1 : 100 @ A1</b></td><td><b>MGS</b></td></tr><tr><td colspan="2"><b>Aylesbury FDS S05 &amp; S06</b></td><td colspan="3"></td></tr><tr><td colspan="2"></td><td colspan="3"><div><div>0m</div><div>2m</div><div>4m</div><div>6m</div><div>8m</div><div>10m</div></div></td></tr><tr><td colspan="2"><div> 106-110 Kentish Town Road London UK NW1 9PX P (020) 7485 8555 F (020) 7485 1232 info@hta.co.uk</div></td><td colspan="3"><b>For Planning</b></td></tr></table>	<b>West Elevation</b>		<b>NHH-FDS_HTA-A_DR_S06-132</b>		<b>B</b>	drawing title		drawing number		revision	client / job name		job reference	scale	drawn	<b>Notting Hill Housing</b>		<b>NHH-FDS</b>	<b>1 : 100 @ A1</b>	<b>MGS</b>	<b>Aylesbury FDS S05 &amp; S06</b>							<div><div>0m</div><div>2m</div><div>4m</div><div>6m</div><div>8m</div><div>10m</div></div>			<div> 106-110 Kentish Town Road London UK NW1 9PX P (020) 7485 8555 F (020) 7485 1232 info@hta.co.uk</div>		<b>For Planning</b>		
rev	date	drawn	description																																																			
-			Initial Application																																																			
A	29/01/15		Minor changes to the internal layout and fenestration positions																																																			
B	27/09/17		Section 73 Application																																																			
<b>West Elevation</b>		<b>NHH-FDS_HTA-A_DR_S06-132</b>		<b>B</b>																																																		
drawing title		drawing number		revision																																																		
client / job name		job reference	scale	drawn																																																		
<b>Notting Hill Housing</b>		<b>NHH-FDS</b>	<b>1 : 100 @ A1</b>	<b>MGS</b>																																																		
<b>Aylesbury FDS S05 &amp; S06</b>																																																						
		<div><div>0m</div><div>2m</div><div>4m</div><div>6m</div><div>8m</div><div>10m</div></div>																																																				
<div> 106-110 Kentish Town Road London UK NW1 9PX P (020) 7485 8555 F (020) 7485 1232 info@hta.co.uk</div>		<b>For Planning</b>																																																				







FFL 37.650 m  
▼ Level 11

FFL 34.500 m  
▼ Level 10

FFL 31.350 m  
▼ Level 9

FFL 28.200 m  
▼ Level 8

FFL 25.050 m  
▼ Level 7

FFL 21.900 m  
▼ Level 6

FFL 18.750 m  
▼ Level 5

FFL 15.600 m  
▼ Level 4

FFL 12.450 m  
▼ Level 3

FFL 9.300 m  
▼ Level 2

FFL 6.150 m  
▼ Level 1

FFL 2.850 m  
▼ Level 0



rev	date	drawn	description
-			Initial Application
A	29/01/15		Minor changes to the internal layout and fenestration positions
B	27/09/17		Section 73 Application

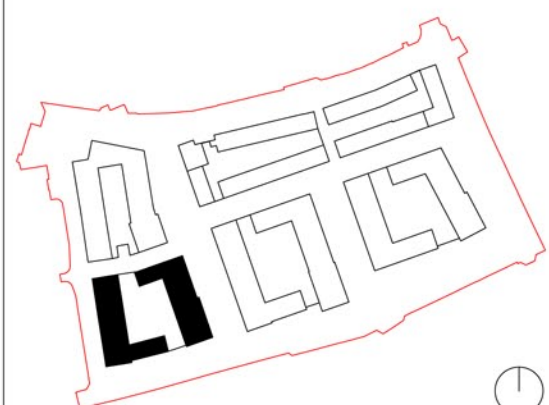
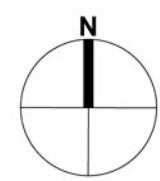
Notes: -

Do not scale from drawings unless by agreement with HTA. Use figured dimensions only. Check all dimensions on site prior to commencing the works. Drawing to be read in conjunction with other relevant consultant information.

This drawing is the copyright of HTA Design LLP, and must not be copied or reproduced in part, or in whole, without the express permission of HTA Design LLP.

This drawing is not for construction purposes and shows design intent only.

Legend:



East Elevation Courtyard

NHH-FDS\_HTA-A\_DR\_S06-134

B

drawing title drawing number revision

client / job name  
**Notting Hill Housing  
Aylesbury FDS S05 & S06**

job reference

**NHH-FDS**

scale

**1 : 100 @ A1**

drawn

**MGS**

0m 2m 4m 6m 8m 10m



106-110 Kentish Town Road London UK NW1 9PX  
P (020) 7485 8555 F (020) 7485 1232 info@hta.co.uk

**For Planning**













<table><thead><tr><th>rev</th><th>date</th><th>drawn</th><th>description</th></tr></thead><tbody><tr><td>-</td><td></td><td></td><td>Initial Application</td></tr><tr><td>A</td><td>15/10/14</td><td></td><td>Block 68 Heights Adjusted</td></tr><tr><td>B</td><td>29/01/15</td><td></td><td>Minor changes to the internal layout and fenestration positions</td></tr><tr><td>C</td><td>27/09/17</td><td>AWP</td><td>Section 73 Application</td></tr><tr><td>D</td><td>25/10/17</td><td>AWP</td><td>Section 73 Application Amendments</td></tr></tbody></table> <p><b>Notes:</b> -</p> <p>Do not scale from drawings unless by agreement with HTA. Use figured dimensions only. Drawing to be read in conjunction with other relevant consultant information. This drawing is the copyright of HTA Design LLP, and must not be copied or reproduced in part, or in whole, without the express permission of HTA Design LLP.</p> <p>This Tender drawing/document describes HTA Design LLP's concept design intent to be achieved by the Design and Build Contractor and any construction proposals shown herein are indicative only. The detailed design resolution and specification of the construction, including the selection and specification of materials and finishes, shall be carried out by the Design and Build Contractor and/or their appointed design consultants and/or specialist subcontractors to achieve the design intent and shall comply with the Employer's Requirements and the requirements of the Building Regulations, the CDM Regulations 2015 and any other relevant health and safety legislation and follow the guidance in any associated approved documents.</p>	rev	date	drawn	description	-			Initial Application	A	15/10/14		Block 68 Heights Adjusted	B	29/01/15		Minor changes to the internal layout and fenestration positions	C	27/09/17	AWP	Section 73 Application	D	25/10/17	AWP	Section 73 Application Amendments	<p><b>Legend:</b></p>		<table><tr><td colspan="2"><b>North Elevation Courtyard</b></td><td colspan="2"><b>NHH-FDS_HTA-A_DR_S06-137</b></td><td><b>D</b></td></tr><tr><td colspan="2">drawing title</td><td colspan="2">drawing number</td><td>revision</td></tr><tr><td colspan="2">client / job name</td><td>job reference</td><td>scale</td><td>drawn</td></tr><tr><td colspan="2">Notting Hill Housing Aylesbury FDS S05 &amp; S06</td><td>NHH-FDS</td><td>1 : 100 @ A1</td><td>MGS</td></tr><tr><td colspan="2"></td><td colspan="3"><div><div>0m</div><div>2m</div><div>4m</div><div>6m</div><div>8m</div><div>10m</div></div></td></tr><tr><td colspan="2"></td><td colspan="3"><div>105-110 Kentish Town Road London UK NW1 9PX P (020) 7485 8555 F (020) 7485 1232 info@hta.co.uk</div><div><b>For Planning</b></div></td></tr></table>	<b>North Elevation Courtyard</b>		<b>NHH-FDS_HTA-A_DR_S06-137</b>		<b>D</b>	drawing title		drawing number		revision	client / job name		job reference	scale	drawn	Notting Hill Housing Aylesbury FDS S05 & S06		NHH-FDS	1 : 100 @ A1	MGS			<div><div>0m</div><div>2m</div><div>4m</div><div>6m</div><div>8m</div><div>10m</div></div>					<div>105-110 Kentish Town Road London UK NW1 9PX P (020) 7485 8555 F (020) 7485 1232 info@hta.co.uk</div> <div><b>For Planning</b></div>		
rev	date	drawn	description																																																						
-			Initial Application																																																						
A	15/10/14		Block 68 Heights Adjusted																																																						
B	29/01/15		Minor changes to the internal layout and fenestration positions																																																						
C	27/09/17	AWP	Section 73 Application																																																						
D	25/10/17	AWP	Section 73 Application Amendments																																																						
<b>North Elevation Courtyard</b>		<b>NHH-FDS_HTA-A_DR_S06-137</b>		<b>D</b>																																																					
drawing title		drawing number		revision																																																					
client / job name		job reference	scale	drawn																																																					
Notting Hill Housing Aylesbury FDS S05 & S06		NHH-FDS	1 : 100 @ A1	MGS																																																					
		<div><div>0m</div><div>2m</div><div>4m</div><div>6m</div><div>8m</div><div>10m</div></div>																																																							
		<div>105-110 Kentish Town Road London UK NW1 9PX P (020) 7485 8555 F (020) 7485 1232 info@hta.co.uk</div> <div><b>For Planning</b></div>																																																							





1. Reconstituted stone cladding panel.
2. Light gold coloured metal panel
3. Reconstituted stone frame
4. Light gold coloured aluminium window frame finish
5. Light gold coloured metal framed part glazed entrance canopy with decorative signage and lighting
6. Glazed balustrade
7. Light gold coloured decorative metal screen door to store

rev	date	drawn	description
-	16/04/15	LTD	Initial Detail Elevation Issue
A	19/02/15	LTD	Minor material and detail amendments
B	25/10/17	AWF	Section 73 Application Amendments

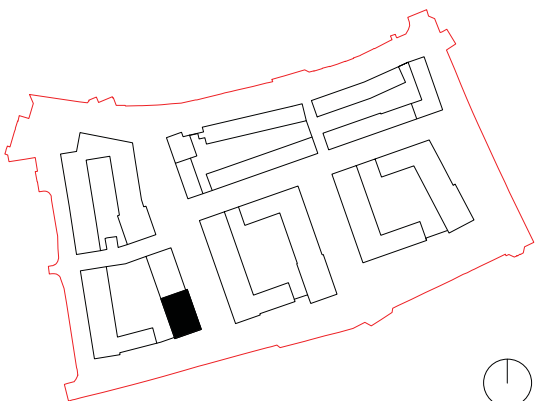
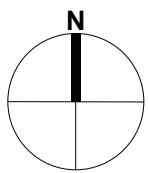
Notes: -

Do not scale from drawings unless by agreement with HTA. Use figured dimensions only. Check all dimensions on site prior to commencing the works.

Drawing to be read in conjunction with other relevant consultant information.

This drawing is the copyright of HTA Design LLP. and must not be copied or reproduced in part, or in whole, without the express permission of HTA Design LLP.

Legend:



## S06 - Detail Elevation Study

NHH-FDS\_HTA-A\_DR\_S06-140

B

drawing title 6B

drawing number

revision

client / job name

job reference

scale

drawn

Notting Hill Housing  
Aylesbury FDS S05 & S06

NHH-FDS

1 : 50 @ A1

AWF

0m 1m 2m 3m 4m 5m



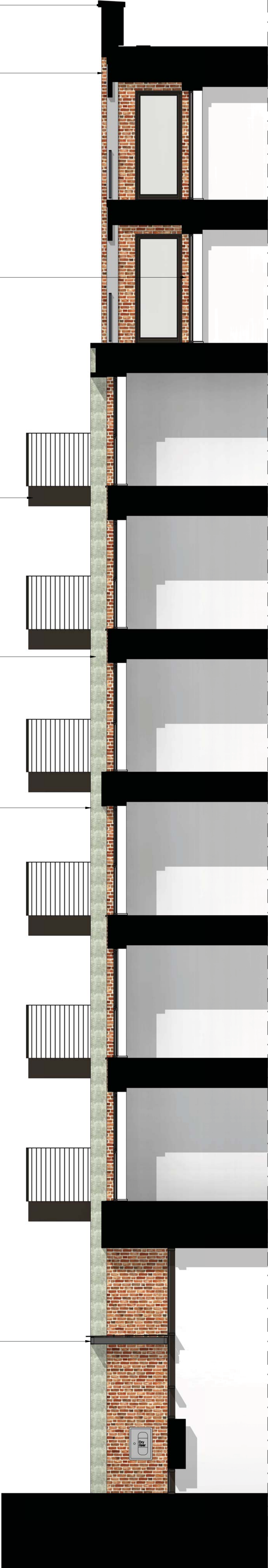
106-110 Kentish Town Road London UK NW1 9PX  
P (020) 7485 8555 F (020) 7485 1232 info@hta.co.uk

For Planning





1  
2  
3  
4  
7  
6  
5  
7  
8

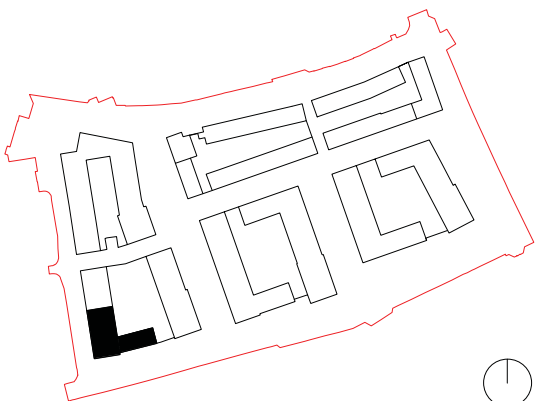
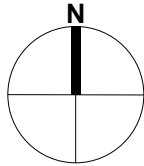


1. Reconstituted stone coping
2. Brickwork - brick type 1.  
Appearance - waterstruck/red
3. Dark sienna coloured aluminium window frame finish
4. Dark sienna coloured projecting metal balcony with aluminium light gold secret fix fascia and soffit
5. Dark seinna coloured metal framed part glazed entrance canopy with decorative signage and lighting
6. Reconstituted stone cladding panels to form edge detail to brick arch
7. Glazed brick  
Appearance - dark teal
8. Dark teal coloured decorative metal screen door to store

rev	date	drawn	description
-	16/04/15	LTD	Initial Detail Elevation Issue
A	19/02/15	LTD	Minor material and detail amendments
B	25/10/17	AWF	Section 73 Application Amendments

Notes: -  
Do not scale from drawings unless by agreement with HTA. Use figured dimensions only. Check all dimensions on site prior to commencing the works.  
Drawing to be read in conjunction with other relevant consultant information.  
This drawing is the copyright of HTA Design LLP. and must not be copied or reproduced in part, or in whole, without the express permission of HTA Design LLP.

Legend:



## S06 - Detail Elevation Study

NHH-FDS\_HTA-A\_DR\_S06-141

B

drawing title 6D

drawing number

revision

client / job name  
**Notting Hill Housing**  
**Aylesbury FDS S05 & S06**

job reference  
**NHH-FDS**

scale  
**1 : 50 @ A1**

drawn  
**AWF**

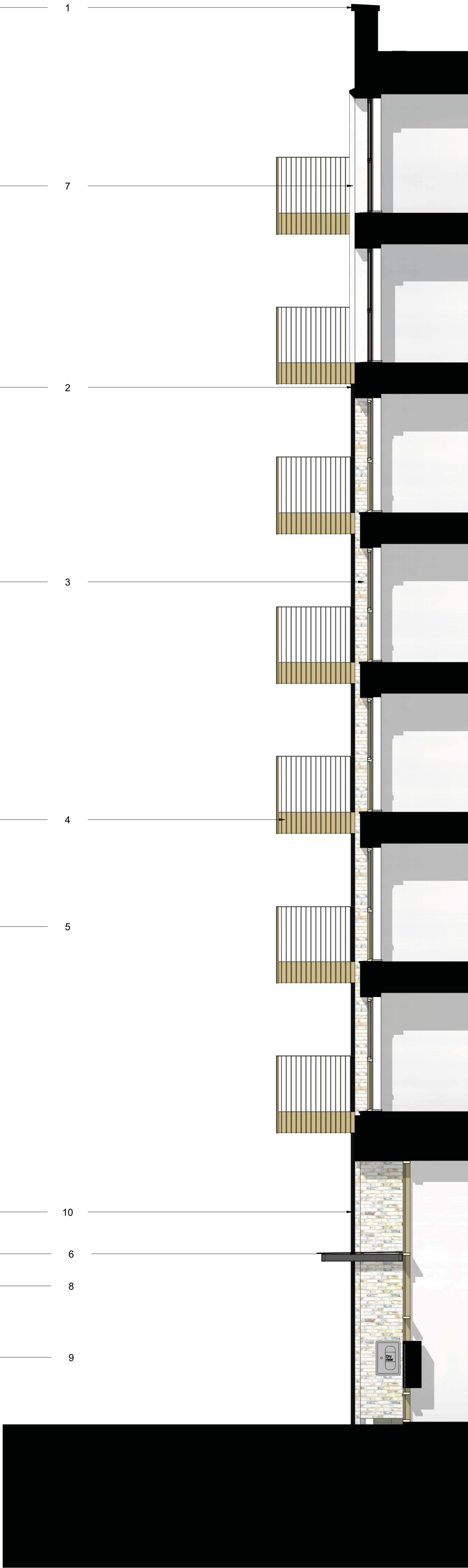
0m 1m 2m 3m 4m 5m



106-110 Kentish Town Road London UK NW1 9PX  
P (020) 7485 8555 F (020) 7485 1232 info@hta.co.uk

**For Planning**



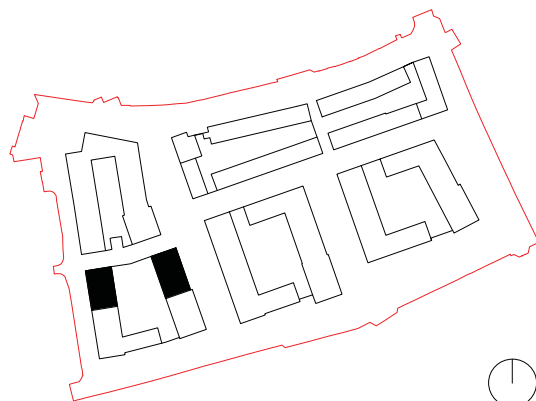
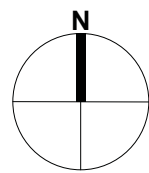


1. Brick coping - brick type 3  
Appearance - cream/silver
2. Brickwork - brick type 3  
Appearance - cream/silver
3. Light gold coloured aluminium window frame finish
4. Light gold coloured projecting metal balcony with aluminium light gold secret fix fascia and soffit
5. Glazed brick  
Appearance - light gold
6. Light gold coloured metal framed part glazed entrance canopy with decorative signage and lighting
7. Reconstituted stone window surround
8. Glazed brick  
Appearance - light gold
9. Light gold coloured decorative metal screen door to store
10. Light gold coloured metal panels to soffit and returns of arch

rev	date	drawn	description
-	16/04/15	LTD	Initial Detail Elevation Issue
A	19/02/15	LTD	Minor material and detail amendments
B	25/10/17	AWF	Section 73 Application Amendments

Notes: -  
Do not scale from drawings unless by agreement with HTA. Use figured dimensions only. Check all dimensions on site prior to commencing the works.  
Drawing to be read in conjunction with other relevant consultant information.  
This drawing is the copyright of HTA Design LLP and must not be copied or reproduced in part, or in whole, without the express permission of HTA Design LLP.

Legend:



## S06 - Detail Elevation Study

NHH-FDS\_HTA-A\_DR\_S06-142

B

drawing title 6B

drawing number

revision

client / job name  
**Notting Hill Housing**  
**Aylesbury FDS S05 & S06**

job reference  
**NHH-FDS**

scale  
**1 : 50 @ A1**

drawn  
**AWF**

0m 1m 2m 3m 4m 5m



106-110 Kentish Town Road London UK NW1 9PX  
P (020) 7485 8555 F (020) 7485 1232 info@hta.co.uk

**For Planning**